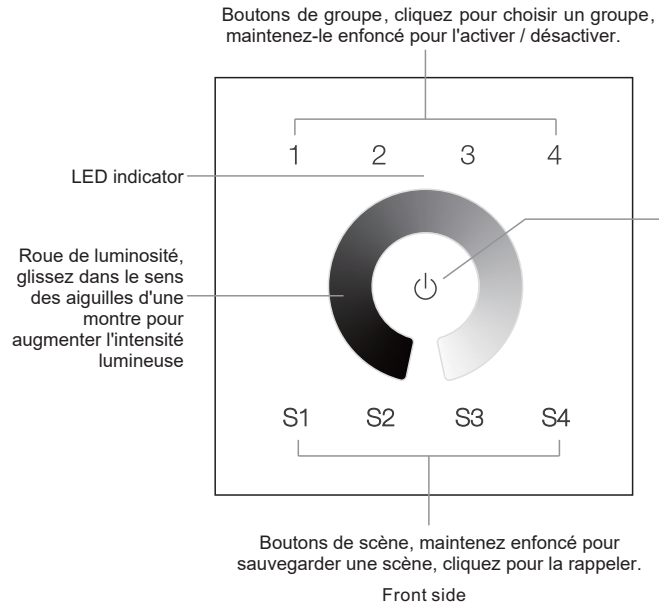


ZigBee Wireless Touch Dimmer Switch

09.ZG2TC4.04786

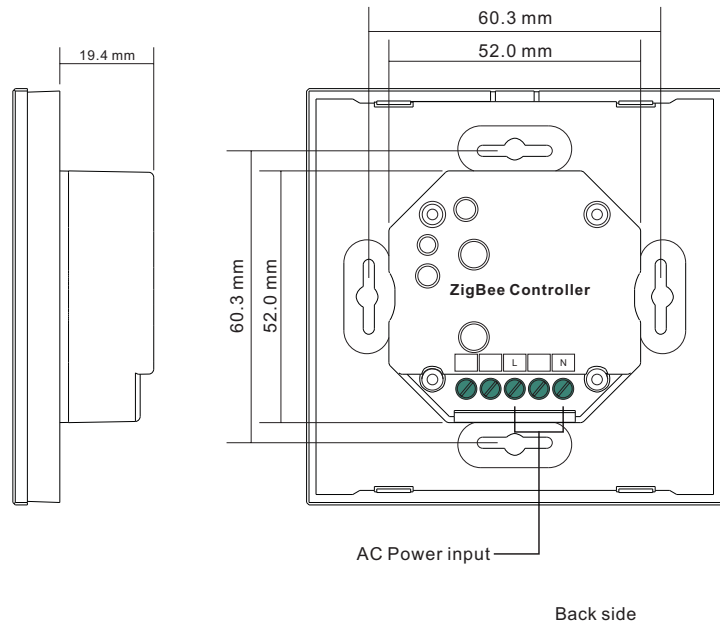


Important: lisez toutes les instructions avant l'introduction de la fonction d'installation



Tout bouton ON / OFF, cliquez pour allumer / éteindre tous les appareils d'éclairage couplés. Appuyez et maintenez enfoncé pour rechercher et associer au réseau ZigBee ou réinitialiser en usine le variateur.

Remarque: cette télécommande prend en charge 4 groupes pour la liaison max. 30 appareils d'éclairage. 4 scènes peuvent être sauvegardées et rappelées pour chaque groupe.



Product Data

Protocol	ZigBee 3.0
Input Voltage	100-240VAC
Transmission Frequency	2.4GHz
Transmission Range (free field)	30m
Protection Type	IP20
Dimming Range	0.1%-100%
Dimensions	86x86x29.1mm

- Gradateur sans fil ZigBee basé sur ZigBee 3.0
- Interface en verre tactile, contrôle d'intensité de lumière douce
- Permet d'apparier des dispositifs d'éclairage ZigBee via une mise en service tactile sans coordinateur
- Prend en charge le mode recherche et liaison pour s' appairer aux dispositifs d'éclairage ZigBee
- Prend en charge 4 groupes pour un maximum . 30 dispositifs d'éclairage
- Fonctionnement global à 2,4 GHz
- Portée de transmission jusqu'à 30 m
- Compatible avec les produits de passerelle ZigBee universels
- Compatible avec les dispositifs d'éclairage universels à gradation ZigBee

ZigBee Clusters Supported by This Remote Are As Follows:

Input clusters:

- Basic
- Power Configuration
- Identify
- Diagnostics

Output clusters:

- Identify
- Scenes
- Group
- On/off
- Level control
- Ota

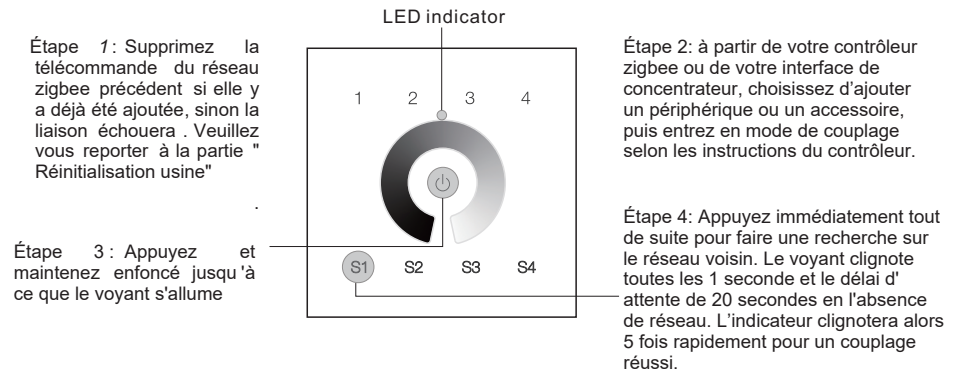
Sécurité et avertissements

- NE PAS installer lorsque l'appareil est sous tension.
- N'exposez PAS l'appareil à l'humidité.

Utilisation

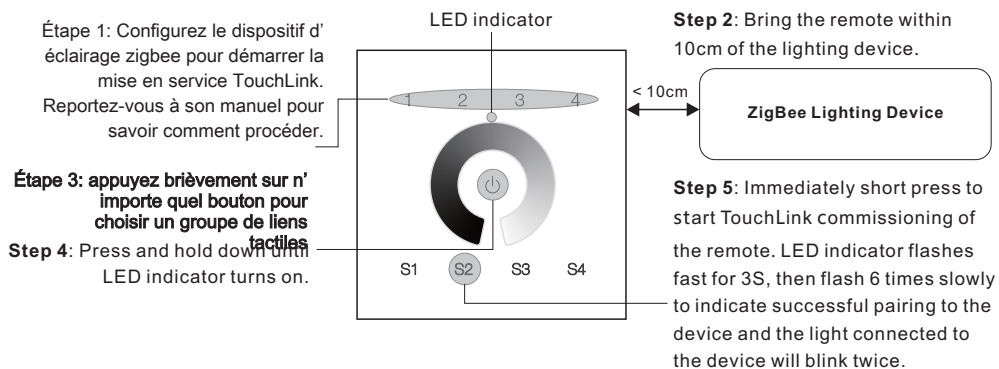
- 1.Cette télécommande distante ZigBee est un émetteur sans fil qui communique avec divers systèmes compatibles ZigBee. Cet émetteur envoie des signaux radio sans fil utilisés pour contrôler à distance un système compatible.
- 2.Cette télécommande ZigBee prend en charge 4 groupes pour la liaison max. 30 dispositifs d'éclairage et permet de contrôler les dispositifs d'éclairage ZigBee monochromes.

3. Couplage de réseau Zigbee via un coordinateur ou un hub (ajouté à un réseau Zigbee)



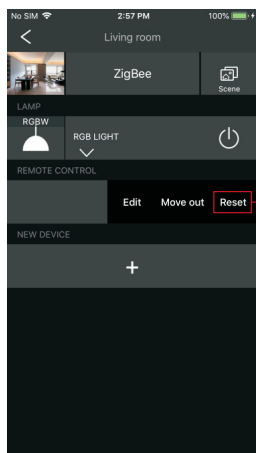
Remarque: 1) Une fois la liaison établie, les informations distantes apparaissent sur l'interface du contrôleur ou du concentrateur. 2) Aucune information distante n'apparaîtra sur l'interface du concentrateur si elle est couplée à Philips Hue Bridge.

4. TouchLink à un dispositif d'éclairage Zigbee



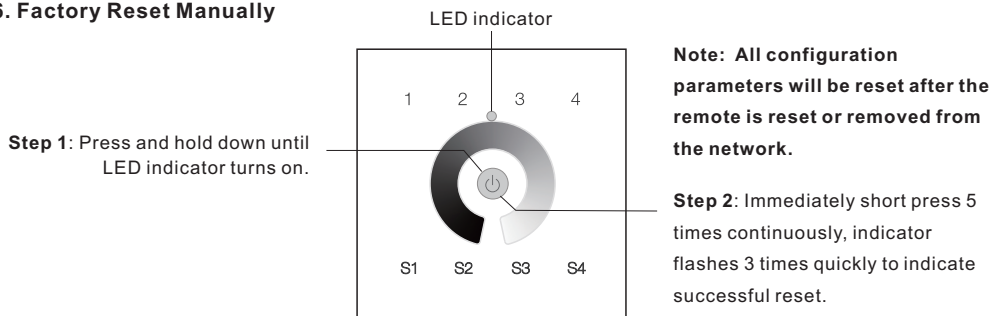
- Note:**
- 1) Directly TouchLink (both not added to a ZigBee network), each remote can link with 30 devices.
 - 2) TouchLink after both added to a ZigBee network, each remote can link with max. 30 devices.
 - 3) For Hue Bridge & Amazon Echo Plus, add remote and device to network first then TouchLink.
 - 4) After TouchLink, the remote can control the linked lighting devices.

5. Removed from a Zigbee Network through Coordinator or Hub Interface

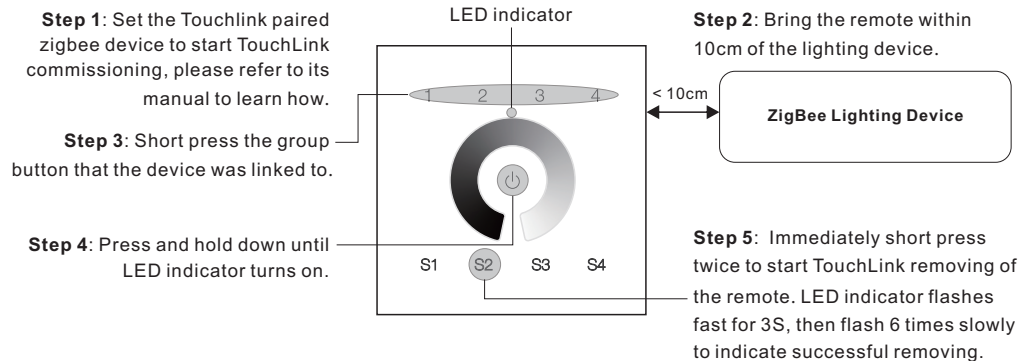


From your ZigBee controller or hub interface, choose to delete or reset the remote as instructed, indicator flashes 3 times quickly to indicate successful removing.

6. Factory Reset Manually

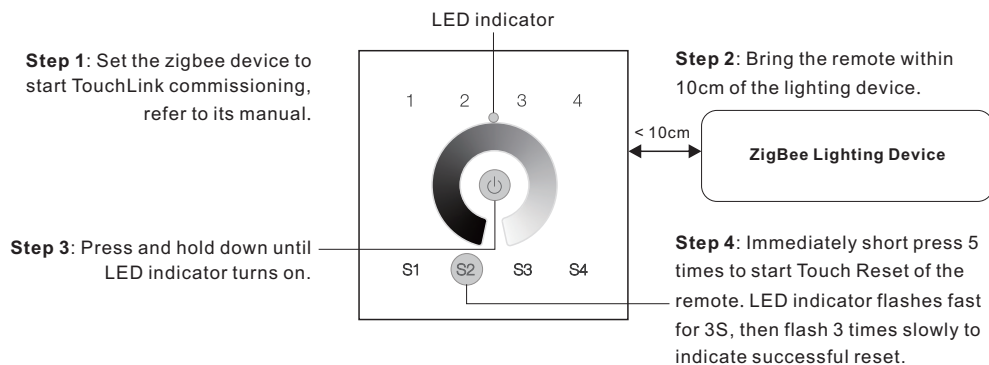


7. Remove a Touchlink Paired ZigBee Lighting Device



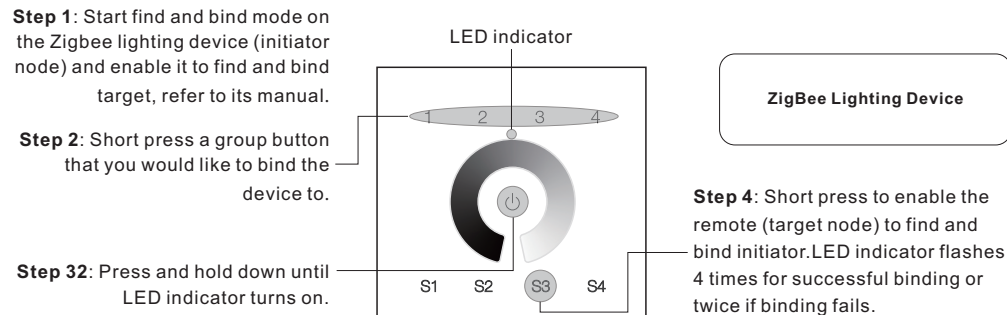
8. Factory Reset a Lighting Device (Touch Reset)

Note: the device shall be added to a network, the remote added to the same one or not added to any network.



9. Find and Bind a Zigbee Lighting Device

Note: Make sure the device and remote already added to the same zigbee network.



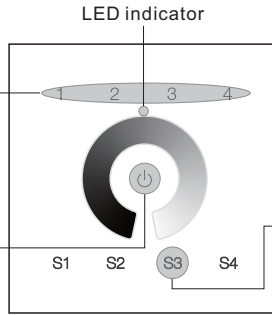
Note: Each remote can bind max. 30 lighting devices.

10. Find and Unbind a Zigbee Lighting Device

Step 1: Start find and bind mode on the Zigbee lighting device (initiator node) and enable it to find and bind target, refer to its manual.

Step 2: Short press the group button that the device already bound to.

Step 3: Press and hold down until LED indicator turns on.



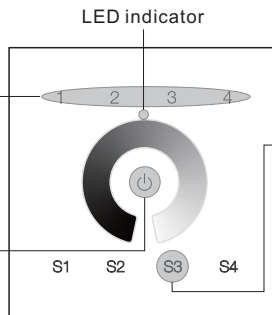
ZigBee Lighting Device

Step 4: Short press twice to enable the remote (target node) to find and unbind initiator. LED indicator flashes 4 times for successful unbinding or twice if unbinding fails.

11. Clear All Find and Bind Mode Paired Lighting Devices

Step 1: Short press to choose the group that you would like to unbind all devices.

Step 2: Press and hold down until LED indicator turns on.

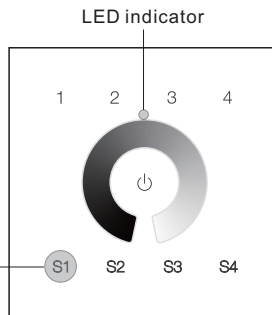


Step 3: Short press 5 times continuously to clear all bound lighting devices. LED indicator flashes 4 times for successful unbinding.

12. Setup a Network & Add Devices to the Network (No Coordinator or Hub Required)

Step 1: Factory reset the remote and the lighting device, refer to their manuals.

Step 3: Short press the group button that the device was linked to.



Step 2: TouchLink the remote and device to setup a network, refer to their manuals.

< 10cm

ZigBee Lighting Device

Step 4: Set another remote into network pairing mode and pair it to the network, refer to its manual.

Step 5: Add more remotes to the network as you would like.

Step 6: Factory reset the lighting devices that you would like to add to the network, refer to their manuals.

Step 7: Touchlink to pair the added remotes and lighting devices you would like to add, the devices will be added to the network through Touchlink, refer to their manuals.

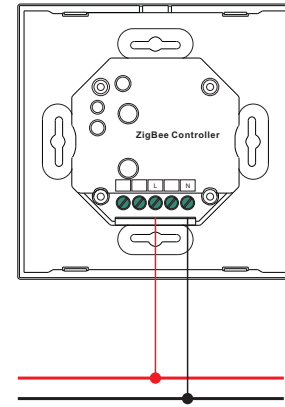
13. OTA

The remote supports firmware updating through OTA, and will acquire new firmware from zigbee controller or hub every 10 minutes automatically.

14. How to Check Whether the Remote Belongs to a Network or not

Short press any other buttons except group buttons, indicator blinking means the remote has already been added to a network, no blinking of indicator means the remote does not belong to any network.

Wiring diagram



Installation

